



Chiltern Street

Aylesbury, HP21 8BW

Guide Price £145,000

RECENTLY REFURBISHED!!! We are pleased to present this recently renovated one bedroom first floor maisonette located close to Stoke Mandeville Station. The property comprises a living room with kitchenette, one bedroom and a bathroom/wc. There is off street parking available on the drive. Offered chain free.

The property is an ideal buy for a first time buyer with its adequate space, and proximity to local amenities. Alternatively, a great purchase for a buy to let landlord, achieving close to £900 per month in rent.

Viewing

Please contact our Bovingdon Office on 01923262666 if you wish to arrange a viewing appointment for this property or require further information.

- First Floor Maisonette
- One Bedroom
- Off Street Parking For Two Vehicles
- Living Room
- Perfect First Time Buy
- Chain Free
- Close to Station
- Newly Renovated



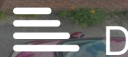
1



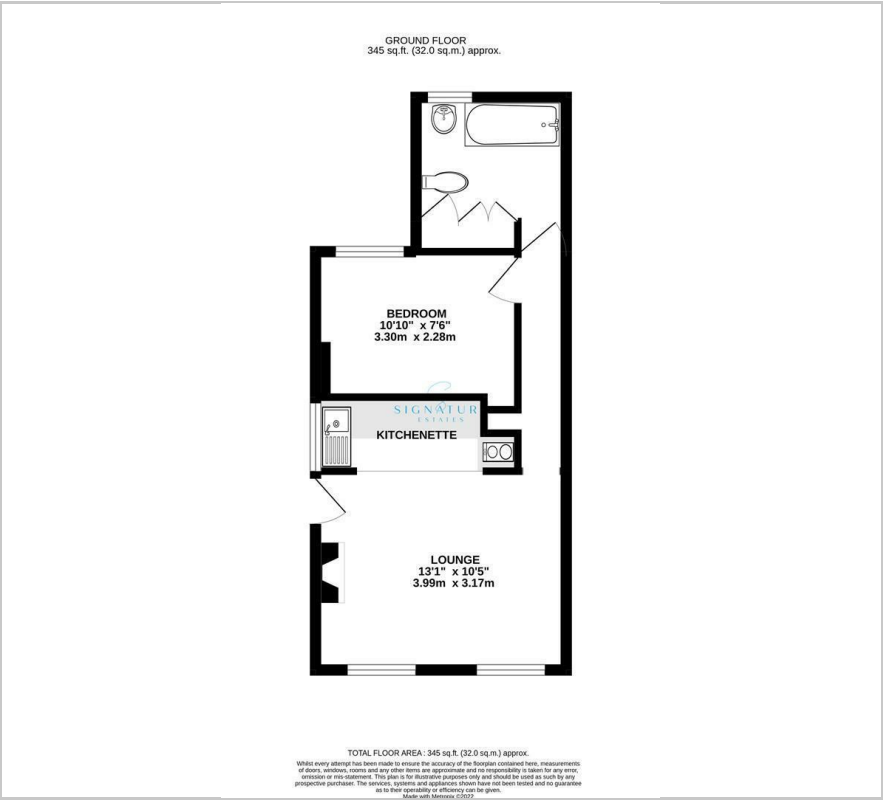
1



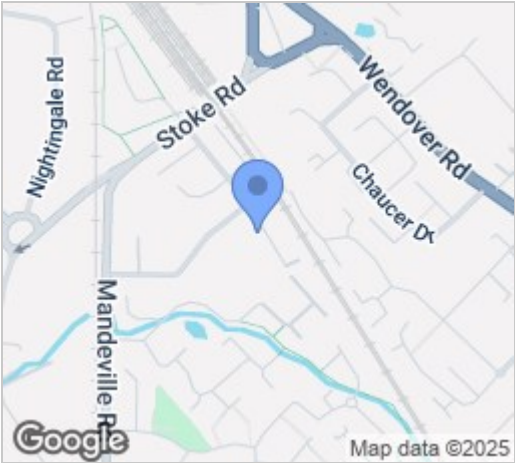
1



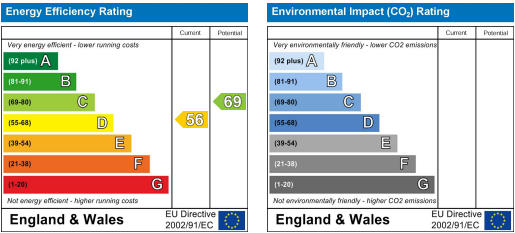
Floor Plan



Area Map



Energy Efficiency Graph



These particulars, whilst believed to be accurate are set out as a general outline only for guidance and do not constitute any part of an offer or contract. Intending purchasers should not rely on them as statements of representation of fact, but must satisfy themselves by inspection or otherwise as to their accuracy. No person in this firm's employment has the authority to make or give any representation or warranty in respect of the property.